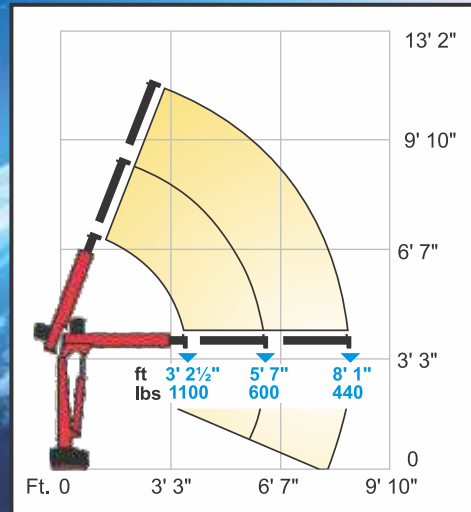


Defy Gravity



HYDRAULICS



DISTRIBUTED BY:



DelCranes.com

SECURE LOAD



LIFT LOAD



PLACE IN VEHICLE



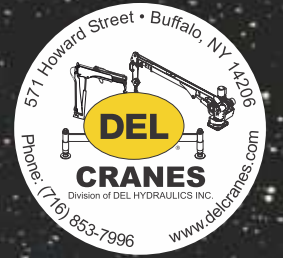
CONTROL VALVE BANK

Efficiently Transport

Appliances, Equipment, Supplies,
Boat Motors, Artwork, Landscaping
and more



maxility



TECHNICAL DATA



Model:	M50.2H ERS
Crane Capacity:	3,700 ft. lbs.
Crane Weight:	210 lbs.
Maximum Reach:	8 ft. 1 in.
Lift Capacity @ 3' - 1":	1,100 lbs
Lift Capacity @ 8' - 1":	440 lbs
Rotation:	Powered - 330 degrees
System:	12V - electric over hydraulic with 2 hydraulic extensions
Controls:	Hand valves console
Accessories:	Available on request

TYPICAL VEHICLE APPLICATION

- **Ford Transit Vans**
- **Ram Promaster Vans**
- **Chevy Vans**
- **GMC Savana Vans**
- **Mercedes Sprinter Vans**
- **Nissan NV Vans**
- **Pickup Trucks**
- **Flatbed Trucks**

